



EMMANUEL'S FOUNDATION



Home Office
Cumming, Georgia
Main: 770-570-2987
Fax: 678-528-9703

URL: www.EmmanuelFoundation.org
E-Mail: ContactUs@EmmanuelFoundation.org
Forum: <http://emmanuelfoundation.org/phpBB2/>



About EF & Cornerstone Communities

Emmanuel's Foundation

Cornerstone Communities are comprised of Emmanuel's Foundation (EF) Staff, Volunteers, Professionals and Affiliates offering support services to families (clients) of Emmanuel's Foundation experiencing a difficult diagnosis for their unborn or infant child. Emmanuel's Foundation is structured to support parents in extended networks as an extension of the families support community to increase access and utilization of appropriate coordinated care.

Emmanuel's Foundation reaches into the communities where families receive a difficult diagnosis of their unborn or infant child and bring awareness of the support that is available to persons having a rare or difficult diagnosis. EF offers a broad overview of services that support families social, emotional, medical, financial and spiritual needs.

Other agencies offer a wide range of social support services but access and enrollment of services is fragmented, and sometimes only addresses one specialized need at a time. None offer a navigational view of services or a guide to the maze of life issues families face with a special needs infant. And none provide systematic follow-up to ensure a family is coping or navigating complex systems appropriately.

Too often we see families learning from trial and error or learning critical information more so from word of mouth and delayed as compared to timely introductions of materials or marketing and awareness campaigns. Delivery of information or availability of resources can be critical or life sustaining in many situations involving a rare or difficult diagnosis of a high risk infant.

EF hopes to reduce challenges in the social system by researching & identifying concentric circles of support (local, state, national & global) for each circumstance. EF efficiently extends outreach services through the formation of strategic partnerships, the use of technology, recruiting volunteers and developing an extended network community.

Throughout the entire journey, our parents are supported through their feelings of grief and loss of expectations this diagnosis makes us feel at one time or another. As we prepare for a journey different from the once expected "normal" plan for life, we come together in community.

The Cornerstone Communities of EF are available to the public for all families, facing the challenges of navigating their infants life of special needs due to a difficult diagnosis; regardless if that diagnosis is rare or more common. Emmanuel's Foundation and Cornerstone Communities are available to client families as long as necessary to help parents adapt their orientation and navigation skills for their particular circumstance.

Needs change as situations change and at every milestone new phases of discovery aid in the journey involving a difficult diagnosis. We allow newly discovered needs to be realized as old avenues close. A community forum allows parents to learn from each other or simply have a social community with a commonality.

Learning how to cope, unfortunately, must be adapted during each phase or milestone of the journey. We understand that preparation is only one part yet coping with the outcome is another.

No one should have to feel alone in this process.

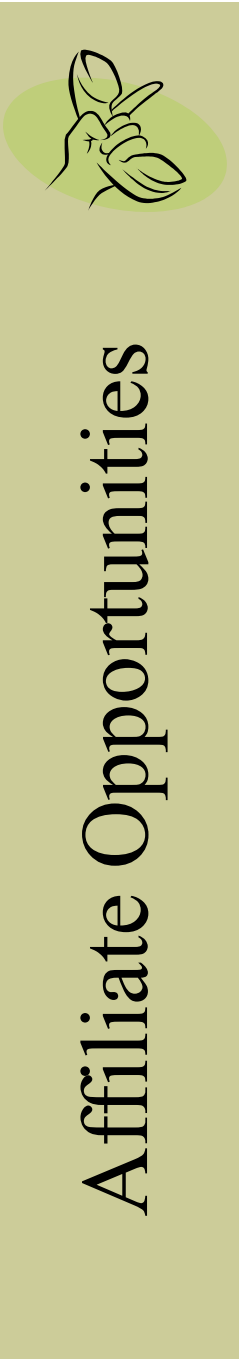
Emmanuel's Foundation is built from the identified need to provide timely information and support to families in crisis or facing end of life issues earlier than expected. In these scenarios, there is typically little time to plan. Our hope is to support families recognizing the sanctity of life and enable our tiniest of citizens and their parents the rights our country proclaims: The Right to Life, Liberty and the Pursuit of Happiness. We hope to support parents in being informed so they are able to navigate this journey, cope and make the best decisions in light of their unique circumstance. ~Janina Arritola

Affiliate Opportunities

Emmanuel's Foundation does not re-invent services already offered, we simply aid in helping "families in need" find appropriate existing resources.

Families turn to Emmanuel's Foundation for information and guidance about the maze of health and life issues involved with a life changing diagnosis of their unborn or infant child. Many of these issues involve long-term & short-term care coupled with social services programs that can help them in public and private sectors.

Effective partnerships are critical to Emmanuel's Foundation to achieve strategic goals, avoid duplication of efforts and to sustain continuity of care and support family cohesiveness. EF seeks affiliates that may not have the funds to market their specialized services to this niche and maximize the availability of resources. Emmanuel's Foundation accepts nominations for affiliates or partnerships. Organizations looking to affiliate with our community can contact us via e-mail at ContactUs@Emmanuel'sFoundation.org to discuss the logistics of doing business together.



The Affiliate Program has several facets offering differing levels of participation based on the Affiliates' mission statement. For that reason, some affiliates only offer online services while some offer in person, by telephone, or online support.

Some affiliates are of the public domain and change frequently and others are of the private sector while some only offer their services to certain areas or for certain criteria ... all affiliates of EF have one thing in common, we all strive together as a community to provide services and support for families who are undergoing the stress of a difficult diagnosis of our unborn or infant child.



Professional Services

Emmanuel's Foundation is looking to affiliate or partner with those who can offer:

- Advocacy Services
- Counseling Services
- Financial Management
- Grief and Loss Support
- Hospice Services
- Legal Services
- Medical :
 - (Care, Case Mgmt, Services, Equipment, tools, therapy)
- Real Estate Services

Any need (due to the qualified event) will be matched to a service to fulfill the need if possible. Additionally we are looking for professionals who work in the areas of :

- Disability
- Homecare
- Pregnancy & Crisis Pregnancy
- Social Services
- Support Groups
- Spirituality
- Special Needs
- Syndrome (Dx) Specific Support

Complimentary donations (of various supplies) will be distributed to families based on supplies donated.



Mandated Resources

Federal Law mandates States provide compliance to ADA. High Risk pregnancies and high risk infants are qualified for certain programs based on specified diagnoses. Enrollment and participation in these programs varies by location and Dx. EF helps families identify entry points to these bureaucratic systems & resources.



Online Affiliations

Many Organizations offer online services to aid in the many facets of living with diverse diagnoses. We are seeking formal permission to link our community to these communities and make this information publicly available via web site, publications and/or message Forums.

One of the Foundations Projects is to compile a comprehensive state by state resource guide and offer a tailored deliverable to each client as part of resource discovery services. If you are interested in contributing to compilation and documentation of resources in your area, please e-mail us at

ContactUs@Emmanuel'sFoundation.org

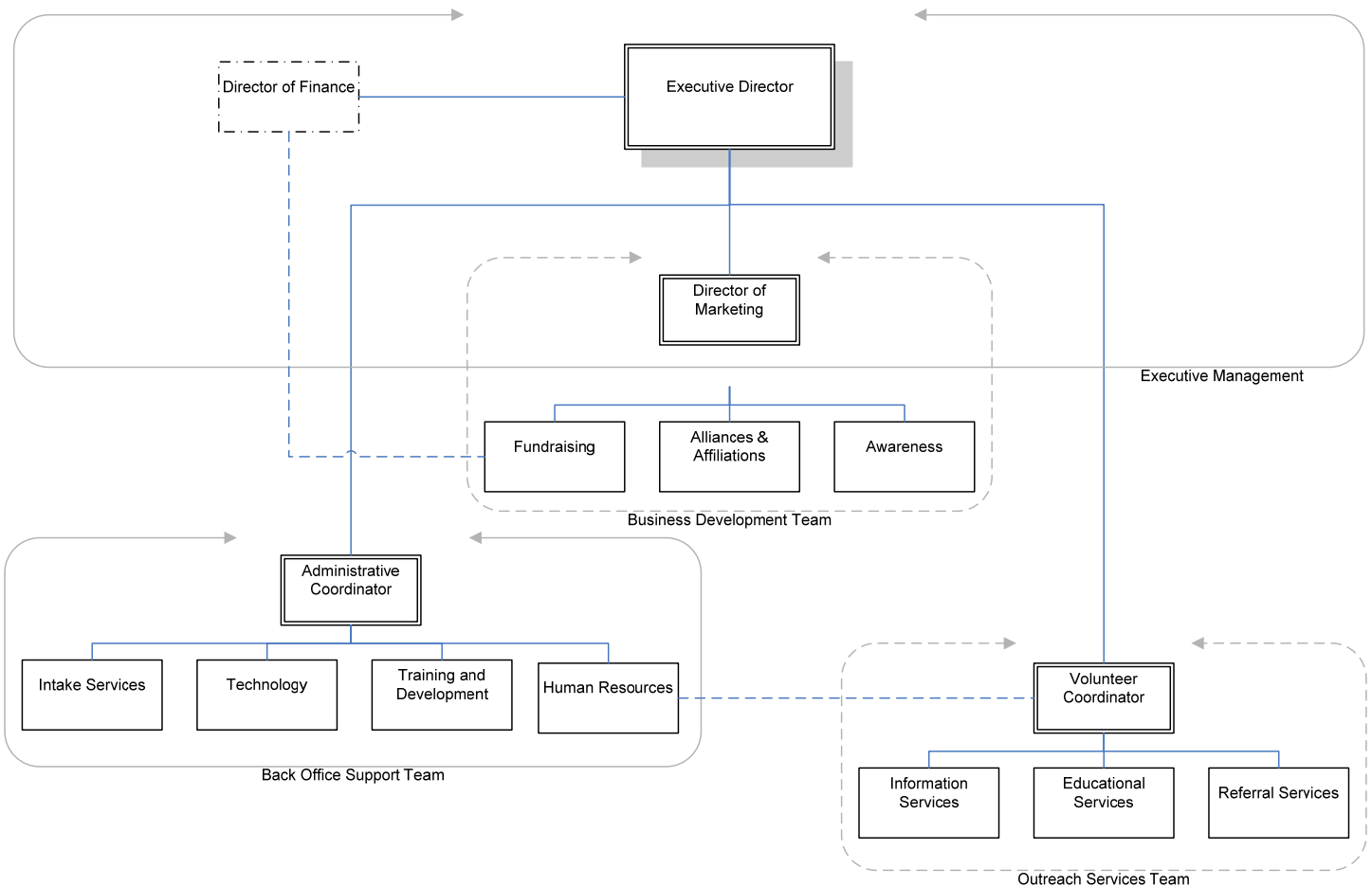
Organizational Chart

Emmanuel's Foundation is structured into four teams to achieve our strategic objectives.

1. Executive Management Team
2. Business Development Team
3. Back Office Support Team
4. Outreach Services Team

Emmanuel's Foundation

Organizational Chart by Team



Client Services

Emmanuel's Foundation offers services that allow the family to tap into local support units at many different levels and enable parents to be their child's best advocate.

Family Support



Each Family meets with a Parent Support Advisor who facilitates one-on-one information and referral services based on the clients geographical location and diagnosis specific information. The Family Support Advisor/Coach/Mentor is an ambassador for Cornerstone Communities and Emmanuel's Foundation Clients.

Visitation



(Per Availability)

Depending on availability of resources in certain geographical locations, families may receive visitation support services at-home or in-hospital situations. These visits to the family may help with other needs that occur during these times. (child sitting, chore help, respite care, breaks, visitation, etc.)

Resource Discovery



Each family has support in the area of resource discovery. EF researches & identifies key-elements and support communities for unique situations. Printed materials are disseminated in various formats to reach audiences and uncover support at Local, County, State, National and Global levels.

Emotional/Spiritual Companionship



We offer to walk by the side of parents in unique situations, silently identifying needs to find appropriate support that help parents in a timely manner. We are like a personal assistant that helps with tasks or phone calls related to obscure needs of a special situation.

Community



Cornerstone Communities are the heart of EF's outreach. Each family shares in the gift of community and since unique situations typically segment support, the Cornerstone Forum offers connection to other families in similar yet diverse situations via the Internet. "The Cornerstone" newsletter provides real life stories that aid in raising awareness and promoting social justice.

EVENTS



Training, Education and Community Awareness Events are scheduled periodically to grow Cornerstone Communities to a world wide community. We envision using marketing and technological advances to enable a cohesive educational community and assure that care is provided with respectful family-professional partnerships while offering online conferences and training for newly diagnosed parents and volunteers.

Roles at EF

The Gift of Time & Talent is Treasured at Emmanuel's Foundation. We are looking for talented, compassionate people who have an urge to reach out to others in the spirit of community.

To submit your interest for a role behind the scenes with our corporate staff, e-mail curriculum vitae or resume of experience to ContactUs@Emmanuel'sFoundation.org and include Corporate Role in the subject header.

Upon submitting your interest, please provide a brief description of which position/role you have interest, why you have an interest in this particular role and how you feel qualified to meet the goals of supporting Cornerstone Communities through Emmanuel's Foundation.



EF Team Leaders

Director of Finance

The Director of Finance reports to the Executive Director and has audit authority over the Fundraising division of the Business Development Team. This role works closely with Executive Management and the Director of Marketing. The Director of Finance is responsible for all accounting functions and filings and financial statements. The Director of Finance is a position elected by the Board of Directors and serves Treasury functions of the Foundation.

Director of Marketing

The Director of Marketing reports to the Executive Director and oversees the EF Business Development Team. The EF Business Development Team is responsible for Marketing Communications, Fundraising, Awareness and Alliances. The Director of Marketing works closely with the Director of Finance and Executive Management to ensure strategic direction of the organization is being achieved.

Coordinator for Volunteer Services

The Coordinator for volunteer services reports directly to the Administrative Coordinator within the Human Resources Division. The Coordinator for Volunteer Service is responsible for Dashboard reports and well as oversee the EF Volunteer Outreach Services Team. The Volunteer Coordinator is the central hub and works closely with the Back Office Support Team and Business Development Team to ensure EF Staff receive proper Informational, Educational and Referral services with appropriate professional support services for individualized client families.

Administrative Coordinator

The Back Office Support Team is led by the Administrative Coordinator who will report directly to the Executive Director. The Administrative Coordinator is responsible for Intake Services and direction and productivity of the HR, Technology, and Training & Development Teams. The Administrative Coordinator is responsible for providing an effective and efficient back office support for Cornerstone Communities through Emmanuel's Foundation Home Office.

Coach & Mentor

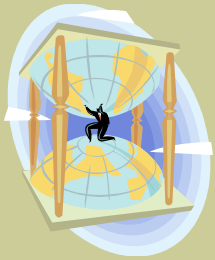
The Mentor Coach supports EF staff, volunteers and strategic goals. A Corporate trainer who is qualified in creating curriculum in staff development, community awareness, marketing, education, professional services or in social support services would be an excellent fit. We are anxious to hear your ideas on how to grow EF to a Nationally recognized organization.

Volunteer Opportunities

Our Volunteers offer their time as a valuable commodity and commitment to families who are in need of many things that are mostly intangible. These roles work closely with EF Teams to deliver specific services as a part of our community.

To submit your interest for a volunteer opportunity: Apply via e-mail at ContactUs@EmmanuelFoundation.org and include Volunteer Role in the subject header

We typically accept resume of experience based upon your past experiences. Upon submitting your interest, please provide a brief description of which position/role you have interest, why you have an interest in this particular role and how you are qualified to meet the goals of supporting Cornerstone Communities through Emmanuel's Foundation.



Volunteer Opportunities

Information and Educational Research

Back Office Research positions are a combination of administrative support and technology expertise. If you are curious by nature, and like to find solutions or document facts, this is the right fit for you. Most research can be done from a computer, in a public library or in a medical library located within your local hospital. Delivery of research material must be timely.

Referral Administrator

This administrative role functions within the Back Office Team and coordinates information from intake, research, social services and works with the Outreach Services team to document proposed action plans or resource guides. This role works closely to communicate information and research tasks to the EF research office.

Social Worker

Volunteer Social Workers work within the Outreach Services Team and the Back Office Support Teams at EF to identify needs, resources and implement action plans. Social workers help people function the best way they can in their environment, deal with their relationships, and solve personal and family problems. Social Workers sometimes accompany Family Support Mentors on one-on-one visits.

Spiritual Companion Liaison

We are looking for leaders of all faith to step forward to Sheppard your own. Our Spiritual Companion Liaison works with families to find a ministry in the clients geographical area that support the families faith and moral values. The Spiritual Companion Liaison will be the herald introducing awareness to the spiritual communities and helping grow Emmanuel's Foundation of spiritual support affiliations across our cornerstone communities.

Support Mentors

Volunteer Support Mentors are part of the Outreach Services Team of Emmanuel's Foundation and perform a number of duties including interacting directly with EF Clients. They are the face to our services and the backbone to our support system. This role involves travel and telephone time as well as good organizational and communication skills.

Information Technology Support Team

The IT Support Team is responsible for continuous development of our web site, back end databases and all Internet Forums. (Must have working knowledge of phpBB, phpChat, various scripting, java, VB, XML, etc.) The IT Specialist Team works with the Coach/Mentor to offer training support via web cast and other state of the art tools. Additionally, the IT Support volunteers may aid in developing and supporting reports for various teams.



Cornerstone Communities

EMMANUEL'S
FOUNDATION

*We are looking for talented, compassionate people
who have an urge to reach out to others
in the spirit of community.*

The previous pages outline corporate, volunteer and affiliate opportunities open for individuals with the right fit. Please consider a role in supporting Cornerstone Communities of Emmanuel's Foundation.

To nominate or submit interest, please
contact us via e-mail at
ContactUs@EmmanuelFoundation.org

Cornerstone Communities™ are affiliates to **Emmanuel's Foundation** which is under application for 501c3 Non-Profit Registration by the IRS and is a registered entity in the state of Georgia.

Emmanuel's Foundation focuses on social services and promoting social justice for vulnerable and tiny citizens. **Emmanuel's Foundation** is dedicated to all families who have received a rare or difficult medical diagnosis for their unborn or infant child. Made possible by Anthony Emmanuel Arritola, a Trisomy survivor that lived 11 months to teach the medical community not by science but by miracles .

Home Office
Cumming, Georgia
Main: 770-570-2987
Fax: 678-528-9703

URL: www.EmmanuelFoundation.org
E-Mail: ContactUs@EmmanuelFoundation.org
Forum: <http://emmanuelfoundation.org/phpBB2/>